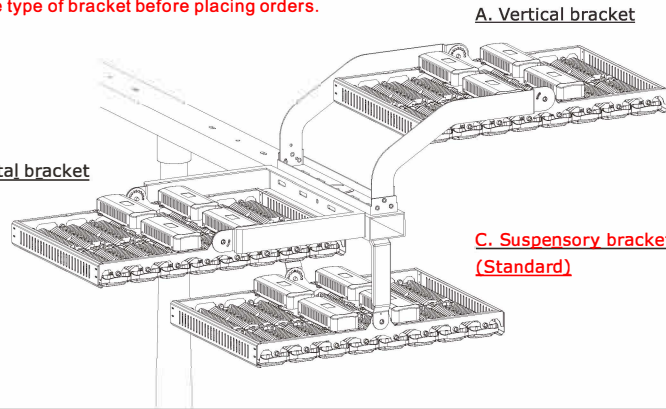


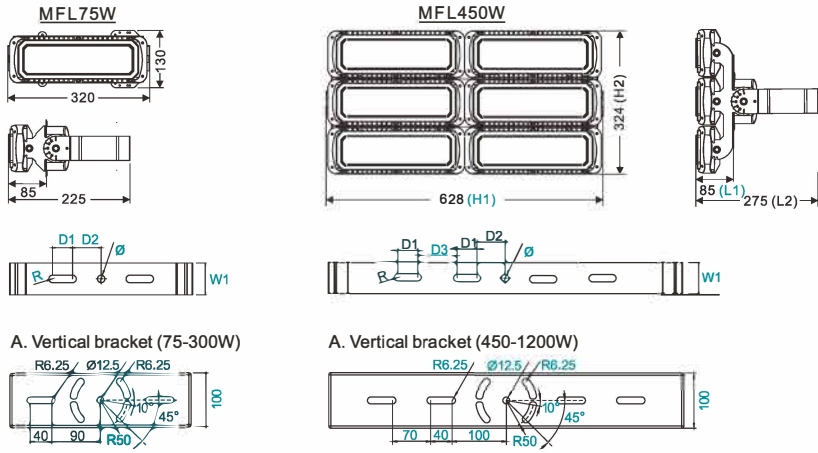
INSTALLATION INSTRUCTIONS

1. Multi-installation ways

Please confirm the type of bracket before placing orders.

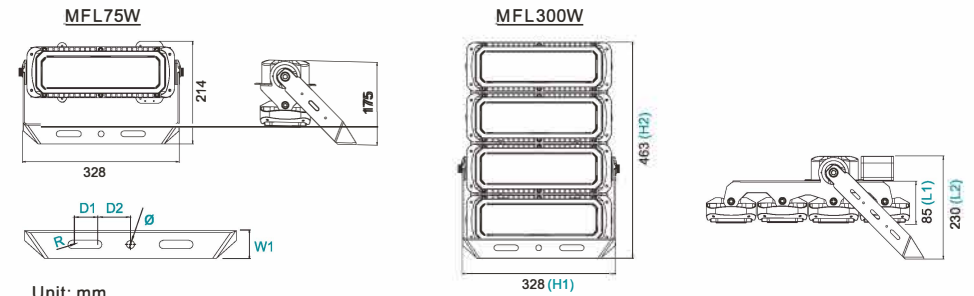


2. Dimensions (Standard)



Power	H1	H2	L1	L2	D1	D2	D3	W1	R	∅
75W	320	130	85	225	40	48	/	55	6.5	12.5
150W	320	215	85	275	40	48	/	55	6.5	12.5
230W	320	324	85	275	40	48	/	55	6.5	12.5
300W	320	433	85	330	40	48	/	55	6.5	12.5
450W	628	324	85	275	40	50	60	66	6.5	12.5
600W	628	433	85	275	40	50	60	66	6.5	12.5
900W	628	690	85	390	40	50	60	66	6.5	12.5
1200W	628	910	85	390	40	50	60	66	6.5	12.5

Dimensions (Tilting Bracket)



Unit: mm

Power	H1	H2	L1	L2	D1	D2	W1	R	∅
75W	328	214	85	175	40	48	42	6.5	12.5
150W	328	257	85	175	40	48	42	6.5	12.5
230W	328	354	85	230	40	48	42	6.5	12.5
300W	328	463	85	230	40	48	42	6.5	12.5

3. Effective Projected Area (EPA=SCx)

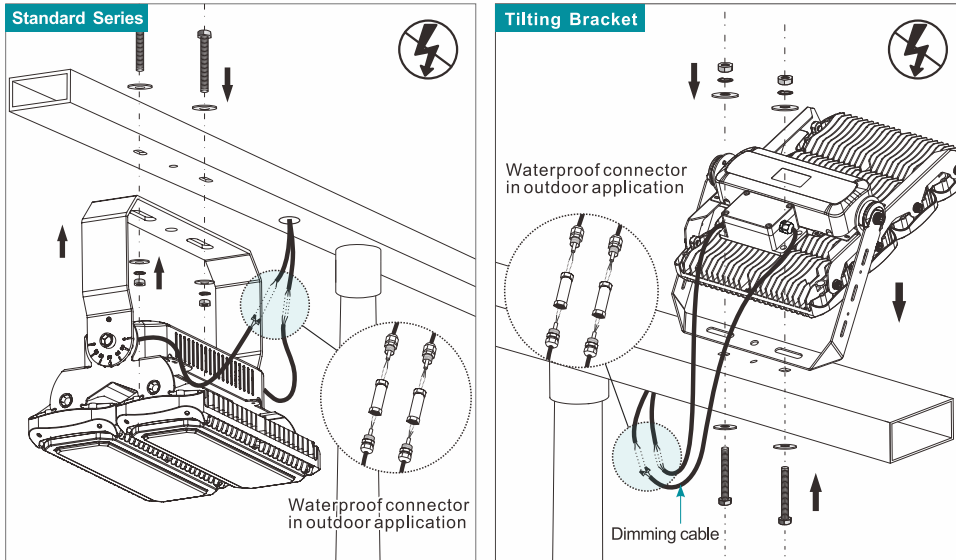
Unit: m²

Tilt angle Model	0°	10°	20°	30°	45°	60°	90°
75W	0.018	0.017	0.016	0.014	0.023	0.028	0.035
150W	0.029	0.027	0.030	0.038	0.046	0.056	0.069
230W	0.040	0.031	0.037	0.041	0.064	0.082	0.104
300W	0.043	0.036	0.031	0.049	0.073	0.095	0.127
450W	0.034	0.027	0.077	0.089	0.131	0.172	0.176
600W	0.061	0.061	0.079	0.104	0.161	0.177	0.236
900W	0.106	0.103	0.131	0.161	0.276	0.372	0.460
1200W	0.116	0.131	0.140	0.222	0.353	0.479	0.583

4. Installation Steps

- Step 1:** Open the box and check your product. In case of damage contact your merchandiser.
- Step 2:** Fasten the brackets on the pole/ wall/ surface with Stainless steel screws.
- Step 3:** Adjust the floodlight to direct the light in desired direction before tightening the screws.
- Step 4:** Be sure to connect the wires correctly. **Brown- Live, Blue- Null, Yellow/Green- grounding.** Make sure power cord was fixed for anti-pull purpose, and the connection is waterproof in outdoor application.
- Step 5:** Switch the voltage on and check to see that the floodlight works properly.

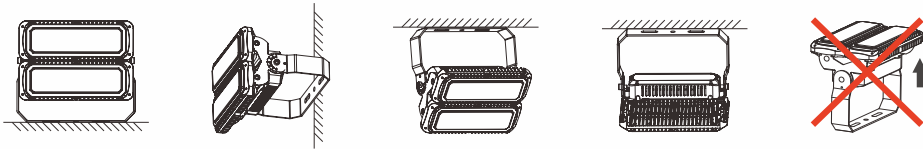
! Both connections of power cord and Dimming cable must be sealed to avoid damage caused by moisture / water.



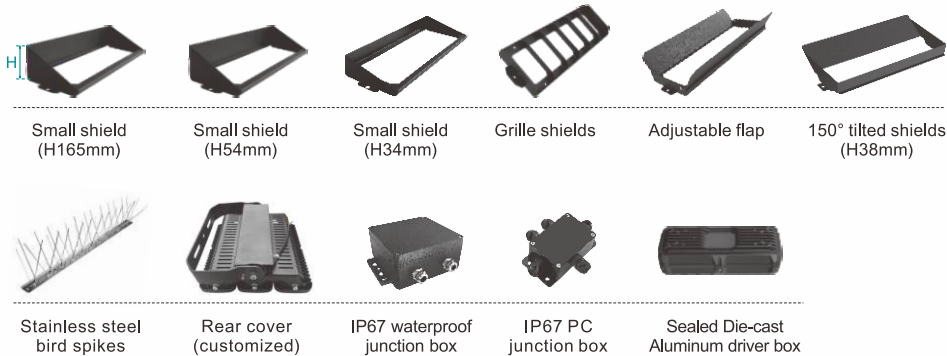
5. Installation position:

This Modular Floodlight can be installed on pole, wall, ceiling or on a horizontal surface.

Note: To avoid dust accumulation on the lens, DO NOT project upwards.

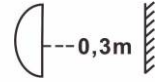


6. Optional Accessory (Not included)



7. Caution:

1. Terminal block not included. Installation and maintenance must be performed by qualified person.
2. The light source of this luminaire is not replaceable; when the light source reaches its end of life the whole luminaire shall be replaced.
3. If the external flexible cable or cord of this luminaire is damaged, it shall be exclusively replaced by the manufacturer or his service agent or a similar qualified person in order to avoid a hazard.
4. Please make sure the holder is strong enough and screws were tighten up.
5. Ground wire must be well connected.
6. Please make sure the lamp is working with correct input voltage.
7. Do not use chemicals or corrosive cleaner to clean the fixture.
8. The minimum distance from lighted objects to luminaries shall be kept at least 0.3m.
9. Broken Glass must be replaced by certified technician.



8. Utilization of used lamps

LED lamps must be disposed of in accordance with current regulations concerning environmental protection. Used lamps should be returned to the applicable collection point, where they will be accepted free of charge. Proper utilization of equipment enables preserving valuable environmental resources and avoiding adverse impacts on health and the environment, which may be threatened by inappropriate waste handling.



CAUTION: ONLY HANDLE SIDE OR BACK BRACKET.

DO NOT PRESS THE MODULES OR HANDLE THE PROTECTION PLATES.

