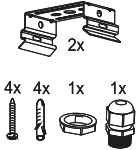
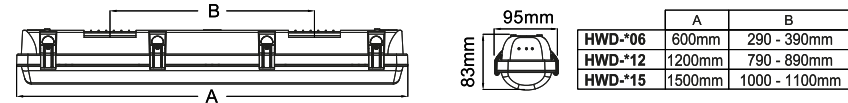


	A	B
HWD-06	600mm	290 - 390mm
HWD-12	1200mm	790 - 890mm
HWD-15	1500mm	1000 - 1100mm

inclusief onderdelen

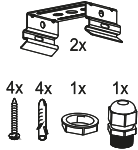


Version		Advanced													
Sensor		Emergency		23W/0.6M		23W/1.2M		40W/1.2&1.5M		60W/1.5M					
1	2	1	2	3	1	2	3	Power	Output	Power	Output	Power	Output	Power	Output
●	●	●	●	●	●	●	●	23W	3519Lm	23W	3519Lm	40W	6120Lm	60W	9180Lm
●	○	●	○	●	○	○	○	20W	3060Lm	20W	3060Lm	36W	5508Lm	52W	7956Lm
○	●	○	●	○	○	○	○	18W	2754Lm	17W	2601Lm	30W	4590Lm	45W	6885Lm
○	○	○	○	○	○	○	●	15W	2295Lm	14W	2142Lm	25W	3825Lm	36W	5508Lm

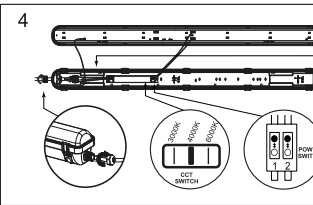
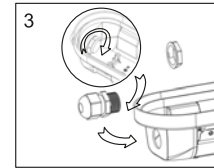
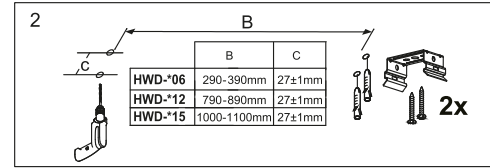
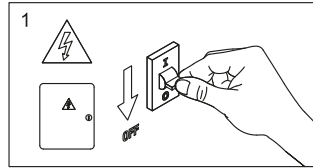
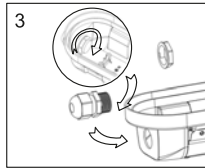
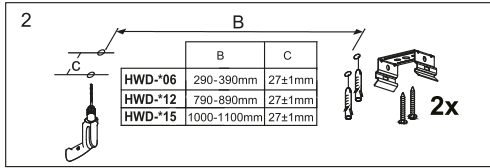
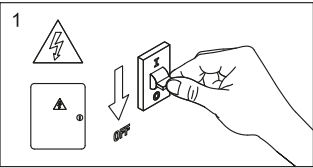


	A	B
HWD-06	600mm	290 - 390mm
HWD-12	1200mm	790 - 890mm
HWD-15	1500mm	1000 - 1100mm

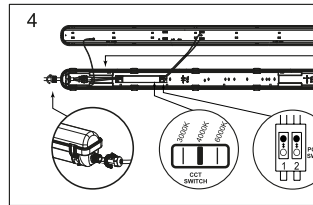
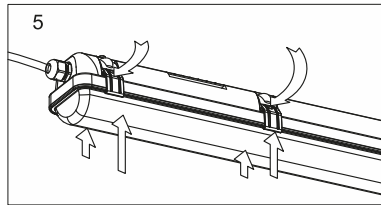
Accessoires compris



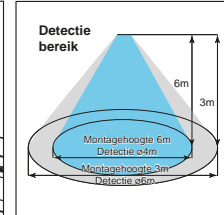
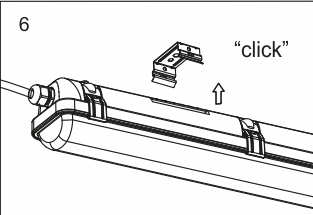
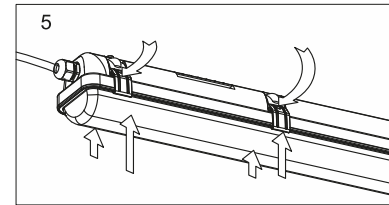
Version		Advanced													
Sensor		Emergency		23W/0.6M		23W/1.2M		40W/1.2&1.5M		60W/1.5M					
1	2	1	2	3	1	2	3	Power	Output	Power	Output	Power	Output	Power	Output
●	●	●	●	●	●	●	●	23W	3519Lm	23W	3519Lm	40W	6120Lm	60W	9180Lm
●	○	●	○	●	○	○	○	20W	3060Lm	20W	3060Lm	36W	5508Lm	52W	7956Lm
○	●	○	●	○	○	○	○	18W	2754Lm	17W	2601Lm	30W	4590Lm	45W	6885Lm
○	○	○	○	○	○	○	●	15W	2295Lm	14W	2142Lm	25W	3825Lm	36W	5508Lm



ON/OFF/Sensor	EM-unit	DALI/DIM
L: Bruin	L:bruin; Zwart	DA2DIM; Zwart
G: Groen	L:licht; Bruin	L: Bruin
G: Blauw	G: Groen	Vert; Groen
N: Blauw	N: Blauw	G: Blauw
		N: Blauw
		DA1DIM; Wit



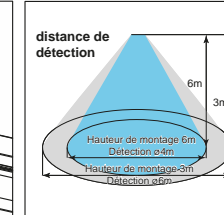
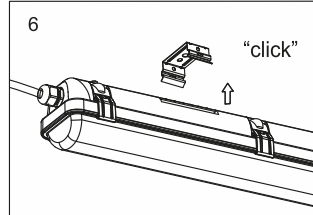
ON/OFF/Sensor	EM-unit	DALI/DIM
L: Bruin	L:bruin; Noir	DA2DIM; Noir
G: Groen	L:licht; Bruin	L: Bruin
G: Blauw	G: Groen	Vert; Vert
N: Bleu	N: Blauw	G: Blauw
		N: Bleu
		DA1DIM; Blanc



Nood-unit: LifePO4 3.2V 3.2Ah 10,24Wh - 3 uur batterijduur

Kleur	LED indicatie	Status	Opmerking
🌿 Groen	Langzaam knipperend (3 sec aan, 1 sec uit)	Laadmodus	AC modus
🟢 Groen	Permanent groen	Volledig opgeladen	AC modus
🌿 Groen	Snel knipperend (0.1 sec, 1 sec uit)	Functionietest bezig	
🌿 Groen	Traag knipperend (1 sec, 1 sec uit)	Duurttest bezig	
🔴 Rood	Permanent rood	Belastingsfout	Open circuit / kortsluiting / LED defect
🔴 Rood	Traag knipperend (1 sec uit, 1 sec off)	Batterij defect	Batterij fout na test geen batterij
⚪ Wit	Groen en rood	DC modus	Batterij in werking

Detectiegebied		Hold time	Daglichtsensor	Stand-by tijd	Stand-by-Dim					
1	2	3	4	5	6	7	8	9		
●	●	100%	●	●	5s	●	●	0s	●	20%
●	○	75%	○	●	30s	○	○	1min	○	
○	●	50%	○	○	3min	○	○	150Lux	○	
○	○	25%	○	○	10min	○	○	+∞	○	30%



Unité d'urgence: LifePO4 3.2V 3.2Ah 10,24Wh - Durée batterie : 3h

Couleur	LED indication	Status	Commentaire
🌿 Vert	Clignotement lent (3 sec on, 1 sec off)	Mode de charge	AC mode
🟢 Vert	Vert permanent	Chargement complet	AC mode
🌿 Vert	Clignotant rapide (0.1 sec, 1 sec off)	Test de fonction en cours	
🌿 Vert	Clignotement lent (1 sec, 1 sec off)	Test de durée en cours	
🔴 Rouge	Rouge Permanent	Défaut de charge	Circuit ouvert / court-circuit Défaillance de la LED
🔴 Rouge	Clignotement lent (1 sec on, 1 sec off)	Panne de batterie	Panne de la batterie pendant le test Pas de batterie
⚪ Blanc	vert et rouge éteint	DC mode	Fonctionnement sur batterie

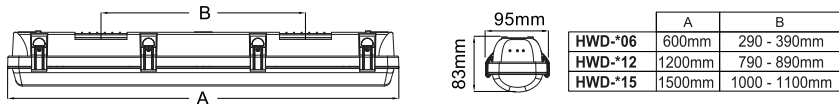
Zone de détection		Durée allumée	capteur de lumière	Durée mode dégradé	Stand-by-niveau					
1	2	3	4	5	6	7	8	9		
●	●	100%	●	●	5s	●	●	0s	●	20%
●	○	75%	○	●	30s	○	○	1min	○	
○	●	50%	○	○	3min	○	○	150Lux	○	
○	○	25%	○	○	10min	○	○	+∞	○	30%

**!** Installatie en onderhoud dienen steeds te gebeuren door gekwalificeerd personeel. De lichtbron van dit armatuur is niet vervangbaar, bij einde van de levensduur moet het armatuur vervangen worden. Raak de Leds op de printplaat niet aan tijdens het onderhoud of reinigen. Gebruik geen chemische oplossingen voor de reiniging van dit toestel. Beschadigde toestellen in originele verpakking worden onder waarborg omgeruild. Controleer steeds of de correcte aansluitspanning aanwezig is.

**Gebruikte lampen:** Breng oude of defecte LED armaturen steeds binnen in een geschikt verzamelpunt in overeenstemming met de geldende voorschriften met betrekking tot milieubescherming. Gebruikte lampen kunnen gedeponeerd worden in een recycleagepunt waar ze gratis worden geaccepteerd. Een correct gebruik van apparatuur maakt het mogelijk om waardevolle milieuhulpbronnen te behouden en negatieve gevolgen voor de gezondheid en het milieu te voorkomen.

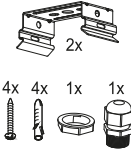
**!** L'installation et la maintenance doivent toujours être effectuées par du personnel qualifié. La source lumineuse de ce luminaire n'est pas remplaçable, le luminaire doit être remplacé à la fin de sa vie. Ne touchez pas les puces led pendant l'entretien ou le nettoyage. N'utilisez pas de solutions chimiques pour le nettoyage de cet appareil. Les appareils endommagés dans leur emballage d'origine sont échangés sous garantie. La mise à la terre doit toujours être correctement connectée pour éviter tout problème de sécurité. Toujours vérifier si la tension de connexion correcte est présente.

**Lampes usagées:** Toujours ramener les appareils à led usés ou défectueux à un point de collecte approprié, conformément aux réglementations en vigueur en matière de protection de l'environnement. Les lampes usagées peuvent être déposées dans un point de recyclage où elles sont acceptées gratuitement. Une utilisation appropriée des équipements permet de préserver des ressources environnementales précieuses et d'éviter des conséquences négatives pour la santé et l'environnement.

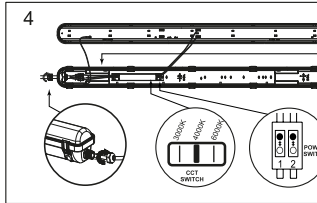
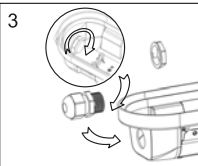
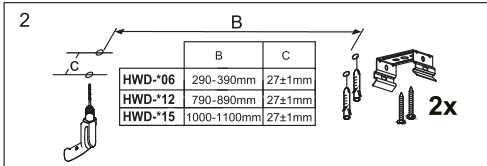
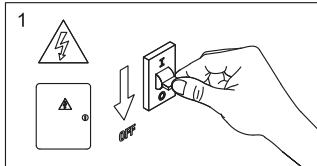


	A	B
HWD-06	600mm	290 - 390mm
HWD-12	1200mm	790 - 890mm
HWD-15	1500mm	1000 - 1100mm

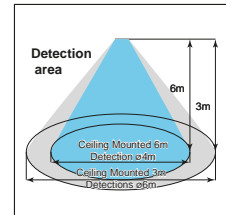
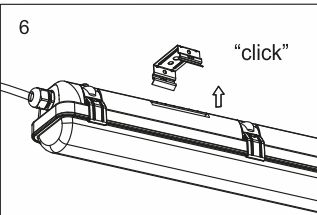
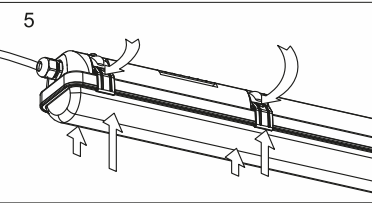
**Accessories included**



Version		Advanced											
Sensor		23W/0.6M		23W/1.2M		40W/1.2&1.5M		60W/1.5M					
ON/OFF	Emergency	Power	Output	Power	Output	Power	Output	Power	Output	Power	Output	Power	Output
1	2	1	2	3	1	2	3	1	2	3	1	2	3
●	●	●	●	●	●	●	●	●	●	●	●	●	●
○	○	○	○	○	○	○	○	○	○	○	○	○	○
○	○	○	○	○	○	○	○	○	○	○	○	○	○
○	○	○	○	○	○	○	○	○	○	○	○	○	○



ON/OFF/Sensor	EM-unit	DALI/DIM
L: Brown	Loortru: Black	DA2/DIM: Black
Green	Lswiches: Brown	L: Brown
G: Yellow	Green	Grn: Green
N: Blue	G: Yellow	G: Yellow
	N: Blue	N: Blue
		DA1/DIM: White



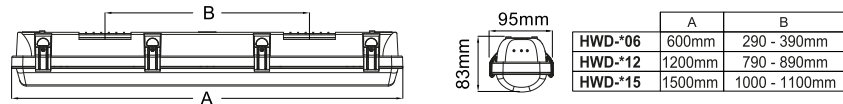
**EM-Unit: LifePO4 3.2V 3.2Ah 10,24Wh - 3 hours bat. duration**

Color	LED indication	Status	Comment
Green	Slow flashing green (3 sec on, 1 sec off)	Charging mode	AC mode
Green	Permanent green	Fully charged	AC mode
Green	Fast flashing green (0.1 sec, 1 sec off)	Function test underway	
Green	Slow flashing green (1 sec, 1 sec off)	Duration test underway	
Red	Permanent red	Load failure	Open circuit / short circuit / LED failure
Red	Slow flashing red (1 sec on, 1 sec off)	Battery failure	Battery failure the duration test or function test / No battery
White	Green and red off	DC mode	Battery operation (EM-mode)

Detection Area		Hold Time	Daylight Sensor	Standby-by period	Stand-by Dim Level
1	2	3	4	5	6
●	●	100%	●	●	5s
●	○	75%	○	○	30s
○	●	50%	○	○	3min
○	○	25%	○	○	10min
○	○		○	○	Disable
○	○		○	○	+∞
●	●	0s	●	●	0s
●	○	1min	○	○	1min
○	●	10min	○	○	10min
○	○	30%	○	○	30%

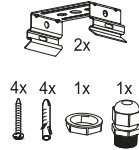
Installation and maintenance should always be done by qualified personnel. The light source of this luminaire is not replaceable, at the end of its life the luminaire must be replaced. Do not touch the Leds on the circuit board during maintenance or cleaning. Do not use chemical solutions to clean this device. Damaged devices in original packaging will be exchanged under warranty. Always check that the correct connection voltage is present.

**Used lamps:** Always bring old or defective LED luminaires into a suitable collection point in accordance with the applicable regulations on environmental protection. Used lamps can be deposited at a recycling point where they will be accepted free of charge. Proper use of equipment makes it possible to conserve valuable environmental resources and avoid negative health and environmental impacts.

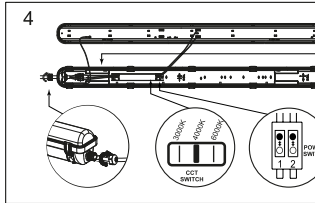
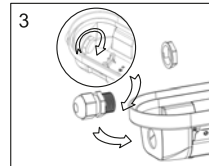
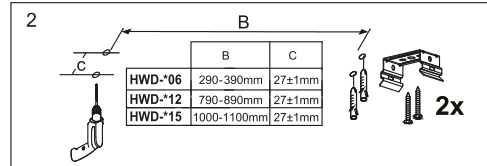
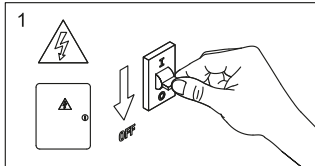


	A	B
HWD-06	600mm	290 - 390mm
HWD-12	1200mm	790 - 890mm
HWD-15	1500mm	1000 - 1100mm

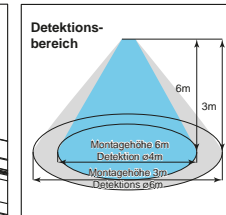
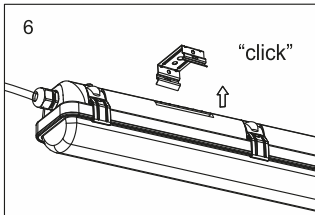
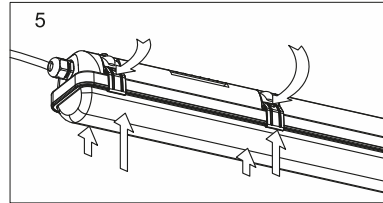
**Inklusive Zubehör**



Version		Advanced											
Sensor		23W/0.6M		23W/1.2M		40W/1.2&1.5M		60W/1.5M					
ON/OFF	Emergency	Power	Output	Power	Output	Power	Output	Power	Output	Power	Output	Power	Output
1	2	1	2	3	1	2	3	1	2	3	1	2	3
●	●	●	●	●	●	●	●	●	●	●	●	●	●
○	○	○	○	○	○	○	○	○	○	○	○	○	○
○	○	○	○	○	○	○	○	○	○	○	○	○	○
○	○	○	○	○	○	○	○	○	○	○	○	○	○



ON/OFF/Sensor	EM-unit	DALI/DIM
L: Braun	Loortru: Schwarz	DA2/DIM: Schwarz
Green	Lswiches: Braun	L: Braun
G: Gelb	Green	Grn: Green
N: Blau	G: Gelb	G: Yellow
	N: Blau	N: Blue
		DA1/DIM: Weiß



**Nodunit: LifePO4 3.2V 3.2Ah 10,24Wh - 3 St. Batterielaufzeit**

Farbe	LED-Anzeige	Status	Kommentar
grün	Langsam blinkendes (3 sec on, 1 sec off)	Auflade-Modus	AC mode
grün	Permanent grün	Voll aufgeladen	AC mode
grün	Schnell blinkend (0.1 sec, 1 sec off)	Funktionstest läuft	
grün	Langsam blinkendes (1 sec, 1 sec off)	Dauertest läuft	
rot	Permanent rot	Ausfall der Belastung	Open circuit / short circuit / LED failure
rot	Langsam blinkendes (1 sec on, 1 sec off)	Ausfall der Batterie	Batterieausfall während des Tests / keine Batterie
grün und rot aus		DC mode	Batteriebetrieb

Detection Area		Hold Time	Daylight Sensor	Standby-by period	Stand-by Dim Level
1	2	3	4	5	6
●	●	100%	●	●	5s
●	○	75%	○	○	30s
○	●	50%	○	○	3min
○	○	25%	○	○	10min
○	○		○	○	Disable
○	○		○	○	+∞
●	●	0s	●	●	0s
●	○	1min	○	○	1min
○	●	10min	○	○	10min
○	○	30%	○	○	30%

Die Installation und Wartung sollte immer von qualifiziertem Personal durchgeführt werden. Die Lichtquelle dieser Leuchte ist nicht austauschbar, am Ende ihrer Lebensdauer muss die Leuchte ersetzt werden. Berühren Sie während der Wartung oder Reinigung nicht die Leds auf der Platine. Verwenden Sie keine chemischen Lösungen zur Reinigung dieses Geräts. Beschädigte Geräte in der Originalverpackung werden im Rahmen der Garantie umgetauscht. Prüfen Sie immer, ob die richtige Anschlussspannung vorhanden ist.

**Gebrauchte Lampen:** Bringen Sie alte oder defekte LED-Leuchten immer zu einer geeigneten Sammelstelle, die den geltenden Umweltschutzbestimmungen entspricht. Gebrauchte Lampen können bei einer Recyclingstelle abgegeben werden, wo sie kostenlos angenommen werden. Der richtige Umgang mit den Geräten ermöglicht es, wertvolle Umweltressourcen zu schonen und negative Auswirkungen auf Gesundheit und Umwelt zu vermeiden.