

# RF RGB Programmable Led Controller

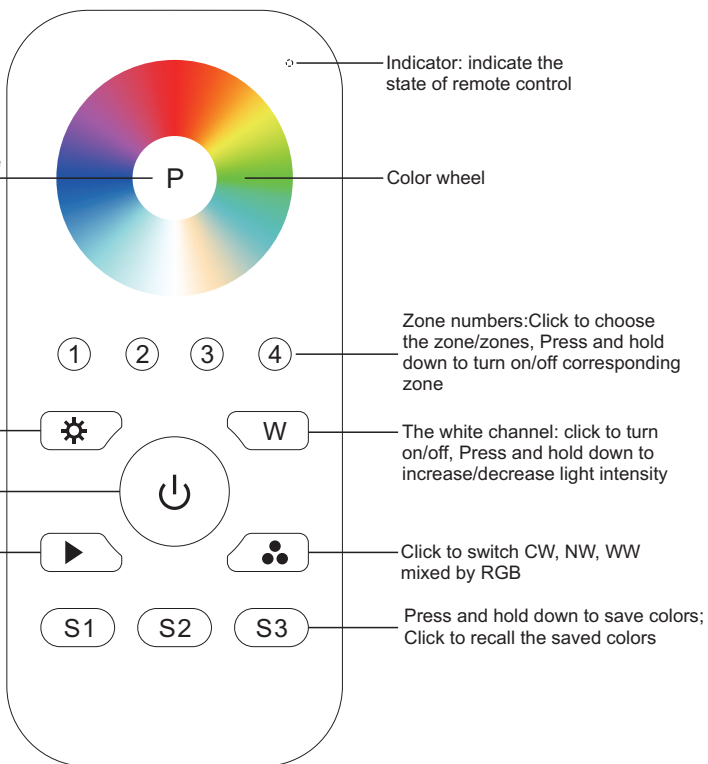
09.289SP.04266



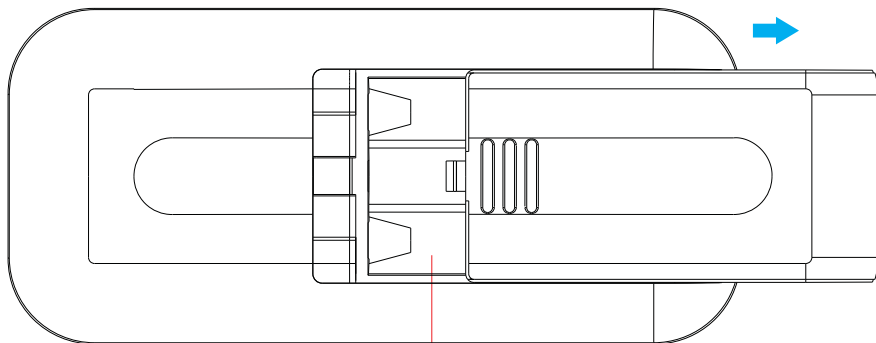
**Important:** Read All Instructions Prior to Installation

## Function introduction

Program: short press to start program, LED light connected with receiver will blink, then touch color wheel to choose a color, then choose another color (make sure to choose at least 2 colors, most 7 colors), then short press the button again to save the chosen colors, LED light connected with receiver will blink to indicate successful program. Now you can use button ▶ to play the colors with different running effects and speeds.



Front side



4.5V(3xAAA battery)

Bottom side

## Product Data

Output	RF signal
Operation Frequency	869.5/916.5/434MHz
Power Supply	4.5V(3xAAA battery)
Operating temperature	0-40°C
Relative humidity	8% to 80%
Dimensions	120x55x17mm

- Control 4 zones of RF receivers separately.
- RGBW color controller
- High sensitive & high stable, fast & precise color control.
- Compatible with all universal series RF receivers
- 1 receiver can be paired by max 8 different remote controls.
- Waterproof grade: IP20

## Safety & Warnings

- This device contains AAA batteries that shall be stored and disposed properly.
- DO NOT expose the device to moisture.

## Pair with RF receiver(Method 1)



**Step 1:** Do wiring the RF receiver according to wiring diagram (please refer to the instruction of RF receiver that you would like to pair with).

**Step 5:** Touch the color wheel, LED lights connected with the RF receiver flicker once means the receiver is paired with zone 4 successfully.

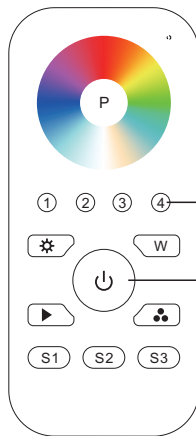
**Step 4:** Choose and click a zone number (e.g. zone 4)

**Step 2:** Click ON/OFF button to activate the remote



**Step 3:** Click the "Learning Key" button on RF receiver or re-power on the receiver three times continuously to set it into pairing status

## Pair with RF receiver(Method 2)



**Step 1:** Do wiring the RF receiver according to wiring diagram (please refer to the instruction of RF receiver that you would like to pair with).

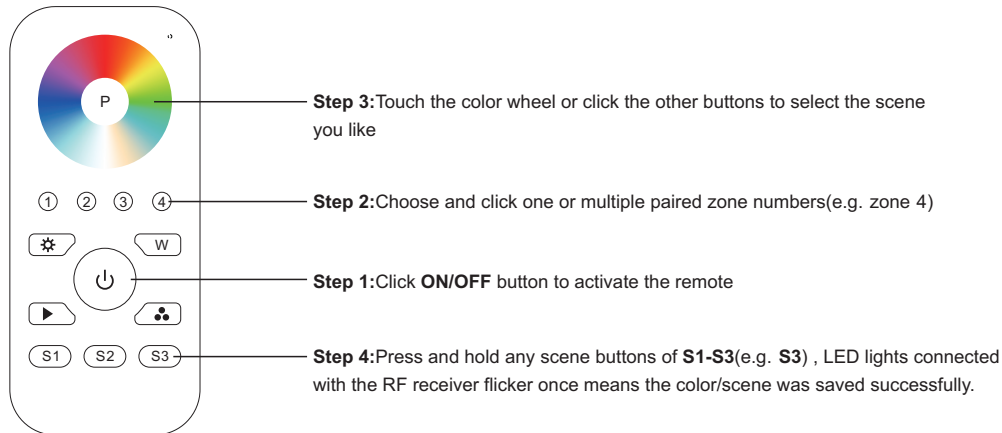
**Step 4:** Choose and click a zone number (e.g. zone 4) twice, then press and hold it continuously and quickly within 10 seconds, LED lights connected with the RF receiver flicker once means the receiver is paired with zone 4 successfully.

**Step 2:** Click ON/OFF button to activate the remote

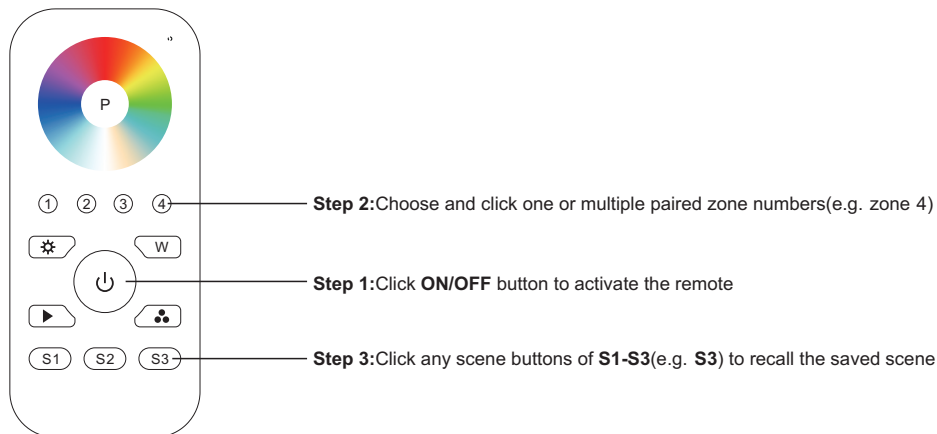


**Step 3:** Power off and power on the receiver

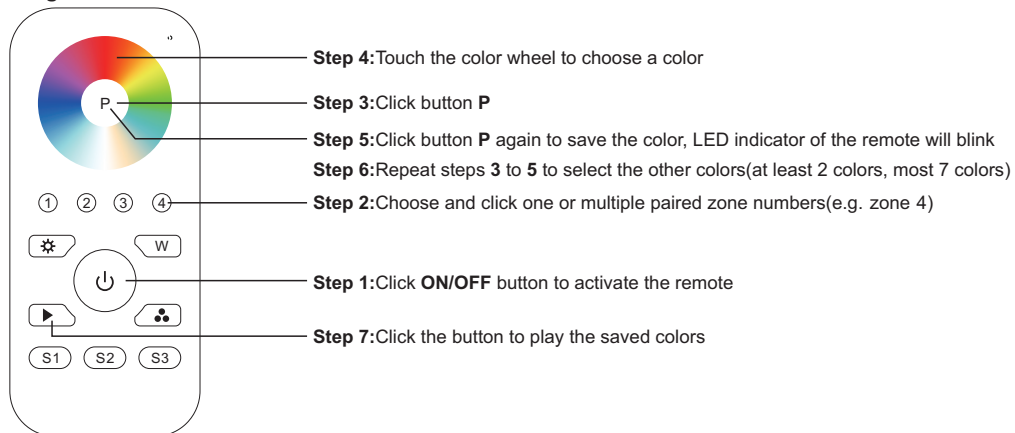
### Save color/scene/mode



### Recall the saved colors/scenes

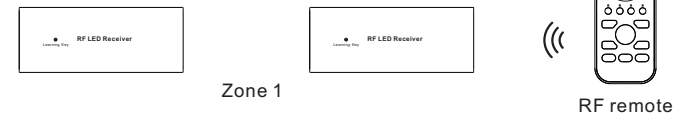


### Program function

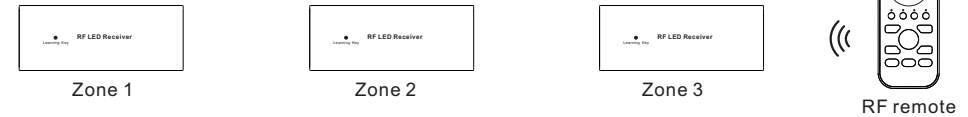


### If you use multiple receivers, you have two choices:

Option 1: have all the receivers in the same zone, like zone 1



Option 2: have each receiver in a different zone, like zone 1, 2, 3 or 4



### How to stop running mode of single color LED light caused by RGBW sender interference:

1. When pairing single color LED light to a single color remote, it might be interfered and paired by nearby RGBW senders, which might control the single color light into running mode. The running mode can not be stopped by the paired single color remote or by delete pairing.
2. Then we need this remote, and pair the remote to the receiver via above "Pair with RF receiver(Method 2)", then touch the color wheel to stop the running mode.
3. Then delete pairing and pair the receiver to the single color remote again, it can be controlled by the remote again.

In conformity with the provisions of Council Directives  
Radio Equipment Directive 2014/53/EU  
Restriction of Hazardous Substances (RoHS) 2011/65/EC and  
Regulation (EC) No 1907/2006 of the European Parliament  
and of the Council (REACH)